



**Integrated Dispensing Solutions 5311 Derry Drive Blding D
Agoura Hills CA 91301 Phone (818) 597-4300
Fax (818) 597-4301 Web: www.dispensinglink.com**

200X200MM Robot

Specifications

3-AXIS MODEL:

Operating range:	X axis/200mm Y axis/200mm Z axis/50mm
Load:	Worktable 15.4 lbs (7kg) Tool 7.7Lbs (3.5kg)
Speed PTP:	5-500 mm/sec X&Y, 2.5-250mm/sec Z
Speed CP:	0.1-500mm/sec XY & 0.1-250mm/sec Z
Repeatability:	±0.01mm per axis
Resolution:	XY & Z axes 0.01mm
Data memory capacity:	100 programs 6000 points
Drive system:	5-phase stepping motor
Operation system:	Point To Point and Continuous Path
Interpolation:	XYZ simultaneous (CP) 3D linear interpolation
Teaching method:	Remote & Manual Data Input (MDI) teaching
CPU:	32 bit (MC68EC020, MC68882)
PLC:	50 programs, 100 steps for each program
I/O signals:	16 input & 16 output signals
External Interface:	RS232C - one channel for PC, one channel for the teach pendant and one channel for external equipment (optional)
Program loading:	Via memory card
System backup:	Main unit has capacitor storage one (1) week
Memory card:	Flash memory without battery for semi-permanent storage
Power supply 110V:	AC 90-132V consumption 200VA
Power supply 220V:	AC 180-250V consumption 200VA
Working temperature:	0 - 40° C
Relative humidity:	20 - 95% no condensation
Dimensions (W x D x H):	12.60 x 14.84 x 21.10 (320 x 377 x 536mm)
Weight:	39.6 lbs (18 kg)



Integrated Dispensing Solutions 5311 Derry Ave Blding D Agoura Hills CA 91301
Phone (818) 597-4300 Fax (818) 597-4301 Web: www.dispensinglink.com

200X200MM Robot

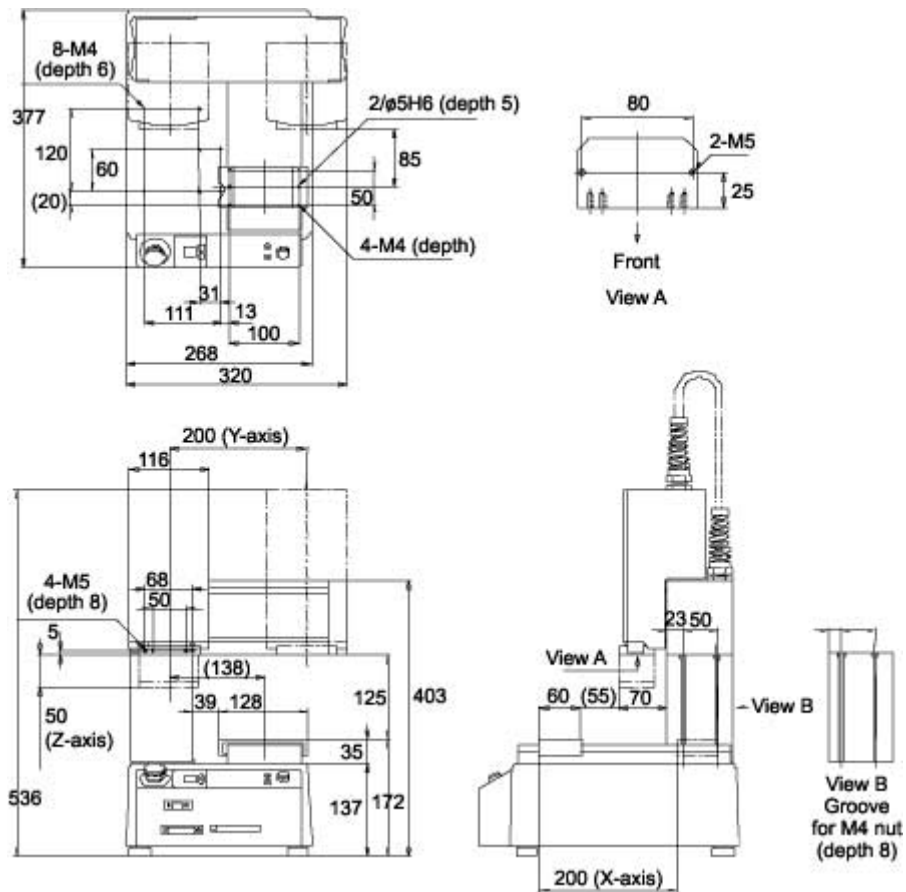
4-AXIS MODEL:

Operating range:	X axis/200mm Y axis/200mm Z axis/50mm R axis/ $\pm 360^\circ$
Load:	Worktable 15.4 lbs (7kg) Tool 7.7Lbs (3.5kg)
Speed PTP:	5-500 mm/sec X&Y, 2.5-250mm/sec Z, R 6-600 $^\circ$ /sec
Speed CP:	0.1-500mm/sec XY & 0.1-250mm/sec Z
Repeatability:	± 0.01 mm per axis
Resolution:	XY & Z axes 0.01mm, R axis 0.02 $^\circ$
Data memory capacity:	100 programs 6000 points
Drive system:	5-phase stepping motor
Operation system:	Point To Point and Continuous Path
Interpolation:	XYZ & R simultaneous (CP) 3D linear interpolation
Teaching method:	Remote & Manual Data Input (MDI) teaching
CPU:	32 bit (MC68EC020, MC68882)
PLC:	50 programs, 100 steps for each program
I/O signals:	16 input & 16 output signals
External Iinterface:	RS232C - one channel for PC, one channel for the teach pendant and one channel for external equipment (optional)
Program loading:	Via memory card
System backup:	Main unit has capacitor storage one (1) week
Memory card:	Flash memory without battery for semi-permanent storage
Power supply 110V:	AC 90-132V consumption 200VA
Power supply 220V:	AC 180-250V consumption 200VA
Working temperature:	0 - 40 $^\circ$ C
Relative humidity:	20 - 95% no condensation
Dimensions (W x D x H):	12.60 x 14.84 x 25.79 (320 x 377 x 655mm)
Weight:	44 lbs (20 kg)



Integrated Dispensing Solutions 5311 Derry Ave Blding D Agoura Hills CA 91301
Phone (818) 597-4300 Fax (818) 597-4301 Web: www.dispensinglink.com

200X200MM Robot



200 x 200MM Robot