



**Integrated Dispensing Solutions 5311 Derry Drive Bldg D
Agoura Hills CA 91301 Phone (818) 597-4300
Fax (818) 597-4301 Web: www.dispensinglink.com**

300X300MM Robot

Specifications 3-Axis model:

| | |
|--------------------------------|--|
| Operating range: | X axis/300mm Y axis/320mm Z axis/100mm |
| Load: | Worktable 24.20 lbs (11kg) Tool 13.20 lbs (6kg) |
| Speed PTP: | 8-800 mm/sec X&Y, 3.2-320mm/sec Z |
| Speed CP: | 0.1-800mm/sec XY & Z |
| Repeatability: | ±0.01mm per axis |
| Resolution: | XY & Z axes 0.01mm |
| Data memory capacity: | 100 programs 6000 points |
| Drive system: | 5-phase stepping motor |
| Operation system: | Point to point and continuous path |
| Interpolation: | XYZ simultaneous (CP) 3D linear interpolation |
| Teaching method: | Remote & Manual Data Input (MDI) teaching |
| CPU: | 32 bit (MC68EC020, MC68882) |
| PLC: | 50 programs, 100 steps for each program |
| I/O signals: | 16 input & 16 output signals |
| Program loading: | Via memory card |
| System backup: | Main unit has capacitor storage one (1) week |
| Memory card: | Flash memory w/o battery for semi-permanent storage |
| Power supply 110V: | AC 90-132V consumption 200VA |
| Power supply 220V: | AC 180-250V consumption 200VA |
| Working temperature: | 0 - 40° C |
| Relative humidity: | 20 - 95% no condensation |
| Dimensions (W x D x H): | 22.05 x 20.83 x 25.55 (560 x 529 x 649mm) |
| Weight: | 77lbs (35kg) |
| External interface: | RS232C - one channel for PC, one channel for the teach pendant and one channel for external equipment (optional) |

300X300MM Robot



Integrated Dispensing Solutions 5311 Derry Ave Blding D Agoura Hills CA 91301
Phone (818) 597-4300 Fax (818) 597-4301 Web: www.dispensinglink.com

300X300MM Robot

4-AXIS MODEL:

| | |
|--------------------------------|--|
| Operating range: | X axis/300mm Y axis/320mm Z axis/100mm R axis/ $\pm 360^\circ$ |
| Load: | Worktable 24.20 lbs (11kg) Tool 13.20 lbs (6kg) |
| Speed PTP: | 8-800 mm/sec X&Y, 3.2-320mm/sec Z, R 8-800 $^\circ$ /sec |
| Speed CP: | 0.1-800mm/sec XY & Z |
| Repeatability: | ± 0.01 mm per axis |
| Resolution: | XY & Z axes 0.01mm R axis 0.02 $^\circ$ |
| Data memory capacity: | 100 programs 6000 points |
| Drive system: | 5-phase stepping motor |
| Operation system: | Point to point and continuous path |
| Interpolation: | XYZ & R simultaneous (CP) 3D linear interpolation |
| Teaching method: | Remote & Manual Data Input (MDI) teaching |
| CPU: | 32 bit (MC68EC020, MC68882) |
| PLC: | 50 programs, 100 steps for each program |
| I/O signals: | 16 input & 16 output signals |
| Program loading: | Via memory card |
| System backup: | Main unit has capacitor storage one (1) week |
| Memory card: | Flash memory without battery for semi-permanent storage |
| Power supply 110V: | AC 90-132V consumption 200VA |
| Power supply 220V: | AC 180-250V consumption 200VA |
| Working temperature: | 0 - 40 $^\circ$ C |
| Relative humidity: | 20 - 95% no condensation |
| Dimensions (W x D x H): | 22.05 x 20.83 x 33.07 (560 x 529 x 840mm) |
| Weight: | 79.2Lbs (36kg) |
| External Interface: | RS232C - one channel for PC, one channel for the teach pendant and one channel for external equipment (optional) |

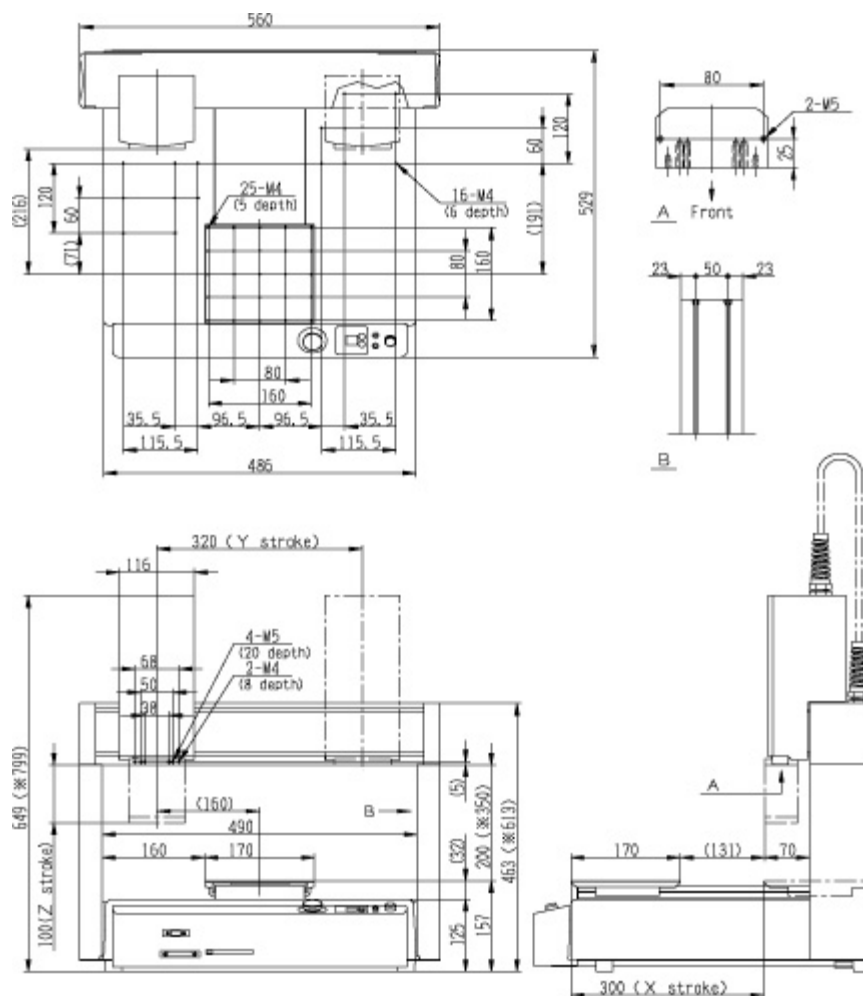
RS232C - one channel for PC, one channel for the teach pendant and one channel for external equipment (optional)

300X300MM Robot



Integrated Dispensing Solutions 5311 Derry Ave Blding D Agoura Hills CA 91301
Phone (818) 597-4300 Fax (818) 597-4301 Web: www.dispensinglink.com

300X300MM Robot



300X300MM Robot